



DRAPERY HARDWARE ESSENTIALS ②



ESSENTIALS ②

Born out of the enormous success of the founding collection Essentials, we have brought forward and expanded our most admired metal and acrylic finials and accessories. This catalogue showcases classic craftsmanship by combining elements of wood, metal, marble, acrylic and resin, thus capturing lasting versatility.

Wood and marble finials feature luxurious **Carrara, Cream & Absolute Black** marble. These remarkable finials are available in three timeless styles that are precision cut into intricate designs using water-jet cutting technology.

Decorative inlay and overlay finials add elegant simplicity to any décor. Inlay finials with their elaborately carved design are inset with resin or metal accents. Overlay finials feature a delicate stencil of natural **Teak, Wenge** or **Beech** wood and have been applied to a frosted resin.

The combination of Essentials & Essentials ② is the ultimate 'super' collection.

3-14 METAL, ACRYLIC & WOOD

15-21 WOOD & MARBLE

22-24 INLAY & OVERLAY

25 WALL DISPLAY

26-27 ACCESSORIES

28-30 SPECIFICATIONS

finial: FNM7008 / finish: 90J5006MC

rod: RDM7025 - 1.5" / finish: 96J5006SM

brackets: BRM58 / button rosette: RBM67 / rings: RIM76 / finish: 90J5006MC

fabric: AIDAN / color: 96J5701



FINISHES

FNM7001 to FNM7004
and **FNM7009 to FNM7012**
are available in three finishes:
90J5006MC – mirror chrome
94J5006AP – antique pewter
99J5006BL – black

1" **FNM7001**
FINISH #99J5006BL
FITS 1" ROD

1.5" **FNM7002**
FITS 1.5" ROD



1" **FNM7009**
FITS 1" ROD

1.5" **FNM7010**
FINISH #99J5006BL
FITS 1.5" ROD

Finials **FNM7001** and **FNM7002**
are available in three finishes



90J5006MC



94J5006AP



99J5006BL



90J5006MC



94J5006AP



99J5006BL

Finials **FNM7009** and **FNM7010**
are available in three finishes

RODS

Metal, acrylic, faux-leather and laminated rods are available in various diameters and lengths. See pages 26 and 27 for complete details.

- 1" 1.5" METAL
- 1" 1.5" ACRYLIC
- 1" 1.5" FAUX-LEATHER
- 1.5" LAMINATED

ACCESSORIES

See pages 26 and 27 for complete range of available accessories.



FNM7003
FITS 1" ROD 1"

FNM7004
FINISH #90J5006MC
FITS 1.5" ROD 1.5"

FNM7011
FINISH #90J5006MC
FITS 1" ROD 1"

FNM7012
FITS 1.5" ROD 1.5"



99J5006BL



94J5006AP



90J5006MC

Finials **FNM7003** and **FNM7004** are available in three finishes



99J5006BL



94J5006AP



90J5006MC

Finials **FNM7011** and **FNM7012** are available in three finishes

FINISHES

FNM7005, FNM7006, FNM7013 and FNM7014 are available in three finishes:
 90J5006MC – mirror chrome
 94J5006AP – antique pewter
 99J5006BL – black

FNM7007, FNM7008, FNM7015 and FNM7016 are available in two finishes:
 90J5006MC – mirror chrome
 94J5006AP – antique pewter

1" **FNM7005**
 FINISH #90J5006MC
 FITS 1" ROD

1.5" **FNM7006**
 FITS 1.5" ROD



1" **FNM7013**
 FITS 1" ROD

1.5" **FNM7014**
 FINISH #90J5006MC
 FITS 1.5" ROD

Finials **FNM7005** and **FNM7006** are available in three finishes



90J5006MC



94J5006AP



99J5006BL

Finials **FNM7013** and **FNM7014** are available in three finishes



90J5006MC



94J5006AP



99J5006BL

RODS

Metal, acrylic, faux-leather and laminated rods are available in various diameters and lengths. See pages 26 and 27 for complete details.

- 1" 1.5" METAL
- 1" 1.5" ACRYLIC
- 1" 1.5" FAUX-LEATHER
- 1.5" LAMINATED

ACCESSORIES

See pages 26 and 27 for complete range of available accessories.



FNM7007
FITS 1" ROD 1"

FNM7008
FINISH #94J5006AP
FITS 1.5" ROD 1.5"

FNM7015
FINISH #94J5006AP
FITS 1" ROD 1"

FNM7016
FITS 1.5" ROD 1.5"



94J5006AP



90J5006MC

Finials **FNM7007** and **FNM7008** are available in two finishes



94J5006AP



90J5006MC

Finials **FNM7015** and **FNM7016** are available in two finishes

FINISHES

FNA41 to FNA46

are available in three finishes:
90J5006MC - mirror chrome
94J5006AP - antique pewter
99J5006BL - black



1" **FNA42**
FINISH #90J5006MC
FITS 1" ROD

1.5" **FNA41**
FINISH #90J5006MC
FITS 1.5" ROD

1.5" **FNA45**
FINISH #90J5006MC
FITS 1.5" ROD



90J5006MC



94J5006AP



99J5006BL



90J5006MC

Finials FNA41 to FNA46
are available in three finishes

RODS

Metal, acrylic, faux-leather and laminated rods are available in various diameters and lengths. See pages 26 and 27 for complete details.

- 1" 1.5" METAL
- 1" 1.5" ACRYLIC
- 1" 1.5" FAUX-LEATHER
- 1.5" LAMINATED

ACCESSORIES

See pages 26 and 27 for complete range of available accessories.

FLING ROD

Permits easy movement of the drapery treatment. Acrylic fling rod length measures 43".



FLA66
FIN. #10J5006MI



FNA44
FINISH #94J5006AP
FITS 1" ROD

FNA43
FINISH #94J5006AP
FITS 1.5" ROD

FNA46
FINISH #94J5006AP
FITS 1" ROD



94J5006AP



99J5006BL



90J5006MC



94J5006AP



99J5006BL

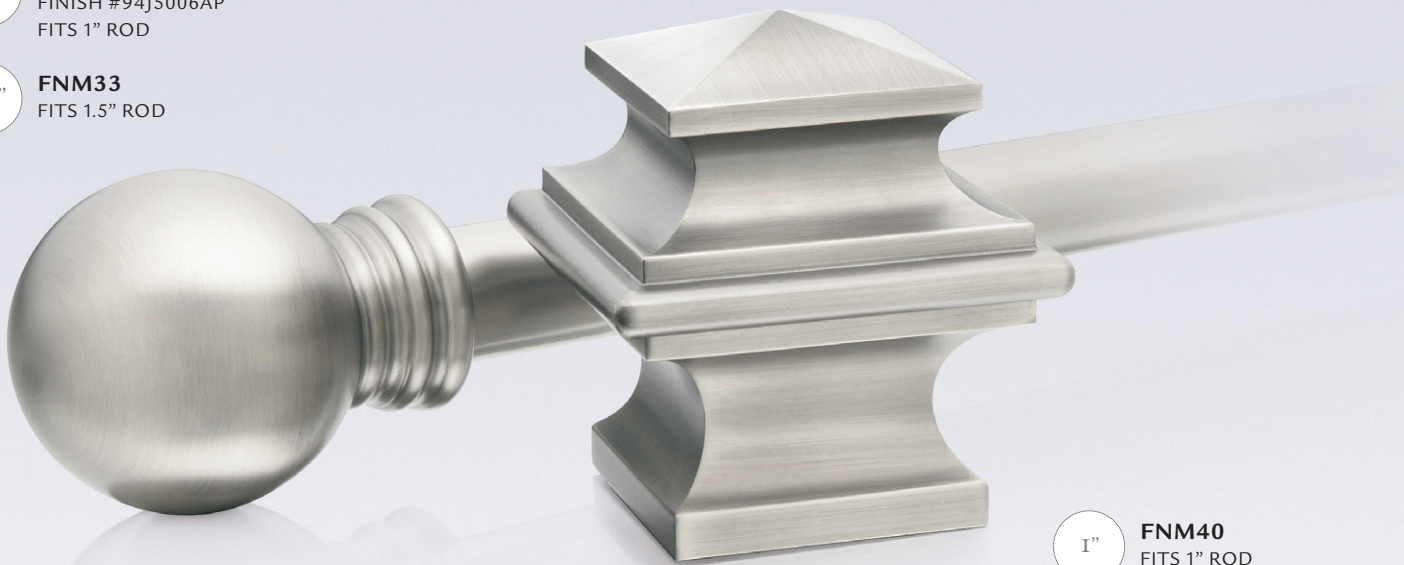
FINISHES

FNM33, FNM34, FNM35, FNM39 and FNM40 are available in three finishes:
 90J5006MC - mirror chrome
 94J5006AP - antique pewter
 99J5006BL - black

FNM38 is available in two finishes:
 94J5006AP - antique pewter
 99J5006BL - black

1" **FNM34**
 FINISH #94J5006AP
 FITS 1" ROD

1.5" **FNM33**
 FITS 1.5" ROD



1" **FNM40**
 FITS 1" ROD

1.5" **FNM39**
 FINISH #94J5006AP
 FITS 1.5" ROD

Finials **FNM33** and **FNM34** are available in three finishes



90J5006MC

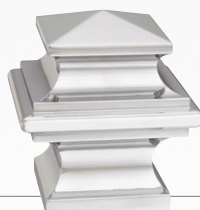


94J5006AP



99J5006BL

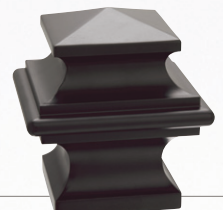
Finials **FNM39** and **FNM40** are available in three finishes



90J5006MC



94J5006AP



99J5006BL

RODS

Metal, acrylic, faux-leather and laminated rods are available in various diameters and lengths. See pages 26 and 27 for complete details.

- 1" 1.5" METAL
- 1" 1.5" ACRYLIC
- 1" 1.5" FAUX-LEATHER
- 1.5" LAMINATED

ACCESSORIES

See pages 26 and 27 for complete range of available accessories.

FLING ROD

Permits easy movement of the drapery treatment. Metal fling rod length measures 39".

FLM65
FIN. #94J5006AP



FNM38
FINISH #99J5006BL
FITS 1.5" ROD

1.5"

FNM35
FINISH #99J5006BL
FITS 1" ROD

1"



99J5006BL



94J5006AP



99J5006BL



94J5006AP



90J5006MC

Finial **FNM35** is available in three finishes
Finial **FNM38** is available in two finishes

FINISHES

FNW8013 to FNW8020
are available in three finishes:
90J5006MC - mirror chrome
94J5006AP - antique pewter
99J5006BL - black

1" **FNW8019**
FINISH #90J5006MC
FITS 1" ROD

1.5" **FNW8020**
FITS 1.5" ROD



1" **FNW8017**
FITS 1" ROD

1.5" **FNW8018**
FINISH #99J5006BL
FITS 1.5" ROD

Finials **FNW8017** and **FNW8018**
are available in three finishes



90J5006MC



94J5006AP



99J5006BL



90J5006MC



94J5006AP



99J5006BL

Finials **FNW8019** and **FNW8020**
are available in three finishes

RODS

Metal, acrylic, faux-leather and laminated rods are available in various diameters and lengths. See pages 26 and 27 for complete details.

- 1" 1.5" METAL
- 1" 1.5" ACRYLIC
- 1" 1.5" FAUX-LEATHER
- 1.5" LAMINATED

ACCESSORIES

See pages 26 and 27 for complete range of available accessories.

- FNW8015** 1"
FINISH #90J5006MC
FITS 1" ROD
- FNW8016** 1.5"
FITS 1.5" ROD

FNW8013 1"
FITS 1" ROD

FNW8014 1.5"
FINISH #94J5006AP
FITS 1.5" ROD



99J5006BL



94J5006AP



90J5006MC

Finials **FNW8013** and **FNW8014** are available in three finishes



99J5006BL



94J5006AP



90J5006MC

Finials **FNW8015** and **FNW8016** are available in three finishes

FINISHES

FNW8009 to FNW8012
are available in three finishes:
90J5006MC - mirror chrome
94J5006AP - antique pewter
99J5006BL - black



1" **FNW8009**
FITS 1" ROD

1.5" **FNW8010**
FINISH #94J5006AP
FITS 1.5" ROD

1" **FNW8011**
FINISH #90J5006MC
FITS 1" ROD

1.5" **FNW8012**
FITS 1.5" ROD

Finials **FNW8009** and **FNW8010**
are available in three finishes



90J5006MC



94J5006AP



99J5006BL



90J5006MC



94J5006AP



99J5006BL

Finials **FNW8011** and **FNW8012**
are available in three finishes



finial: FNW8001 / **finish:** 94J5006AP
rod: RDM7029 - 1.5" / **finish:** 46J5006UM
brackets: BRM58 / **button rosette:** RBM67
rings: RIM76 / **finish:** 94J5006AP
fabric: HUMPHREY / **color:** 96J5621

FINIALS

Wood and **marble** finials feature luxurious **Carrara**, **Cream** and **Absolute Black** marble. These remarkable finials are available in three timeless styles that are precision cut into intricate designs using water-jet cutting technology.

FINISHES

FNW8001 to FNW8008 are available in three base finishes:
90J5006MC - mirror chrome
94J5006AP - antique pewter
99J5006BL - black



1.5" **FNW8006**
BASE FINISH #94J5006AP
FITS 1.5" ROD

1.5" **FNW8002**
BASE FINISH #99J5006BL
FITS 1.5" ROD

Finials **FNW8001 to FNW8008** are available in three base finishes

RODS

Metal, acrylic, faux-leather and laminated rods are available in various lengths. See pages 26 and 27 for complete details.

1.5" METAL

1.5" ACRYLIC

1.5" FAUX-LEATHER

1.5" LAMINATED

ACCESSORIES

See pages 26 and 27 for complete range of available accessories.

FNW8007



90J5006MC 94J5006AP 99J5006BL

FNW8008



90J5006MC 94J5006AP 99J5006BL

FNW8006



90J5006MC 94J5006AP 99J5006BL

FNW8004



90J5006MC 94J5006AP 99J5006BL

FNW8005



90J5006MC 94J5006AP 99J5006BL

FNW8003



90J5006MC 94J5006AP 99J5006BL

FNW8001



90J5006MC 94J5006AP 99J5006BL

FNW8002

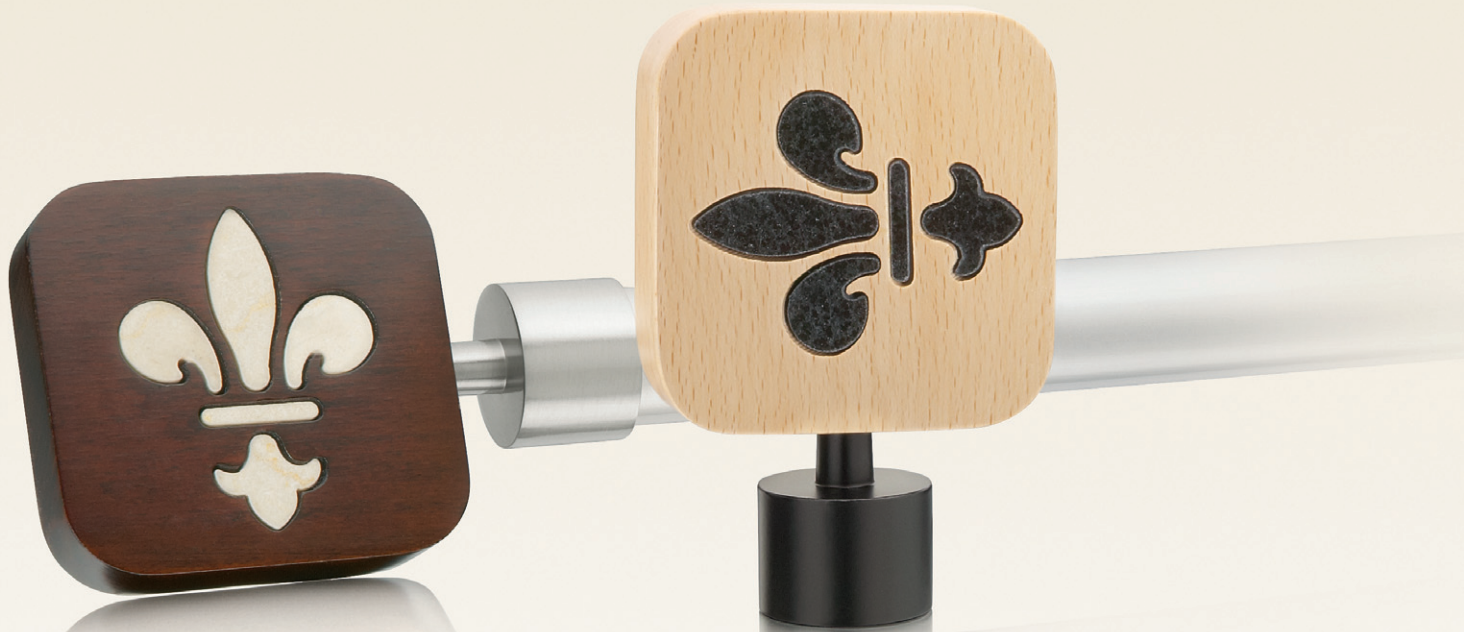


90J5006MC 94J5006AP 99J5006BL

Finials **FNW8001** to **FNW8008** are available in three base finishes

FINISHES

FNW8021 to FNW8027
are available in three base finishes:
90J5006MC - mirror chrome
94J5006AP - antique pewter
99J5006BL - black



1" **FNW8022**
BASE FINISH #94J5006AP
FITS 1" ROD

1" **FNW8026**
BASE FINISH #99J5006BL
FITS 1" ROD

Finials **FNW8021 to FNW8027**
are available in three base finishes

RODS

Metal, acrylic and faux-leather rods are available in various lengths. See page 26 for complete details.

- 1" METAL
- 1" ACRYLIC
- 1" FAUX-LEATHER

ACCESSORIES

See pages 26 and 27 for complete range of available accessories.

FINIALS

Fleur de lys finials FNW8021 to FNW8027 come in pairs specifically designed to fit the left and right ends of the rod as shown below. **Sold in pairs only.**



FNW8027



FNW8026



FNW8024



FNW8025



FNW8023



FNW8021



FNW8022



Finials **FNW8021** to **FNW8027** are available in three base finishes

FINISHES

FNW8039 to FNW8045
are available in three base finishes:
90J5006MC - mirror chrome
94J5006AP - antique pewter
99J5006BL - black



1" **FNW8041**
BASE FINISH #90J5006MC
FITS 1" ROD

1" **FNW8040**
BASE FINISH #94J5006AP
FITS 1" ROD

Finials **FNW8039 to FNW8045**
are available in three base finishes

RODS

Metal, acrylic and faux-leather rods are available in various lengths. See page 26 for complete details.

- 1" METAL
- 1" ACRYLIC
- 1" FAUX-LEATHER

ACCESSORIES

See pages 26 and 27 for complete range of available accessories.

FLING ROD

Permits easy movement of the drapery treatment. Metal fling rod length measures 39".

FLM65
FIN. #94J5006AP



FNW8045



FNW8044



FNW8042



FNW8043



FNW8041



FNW8039



FNW8040



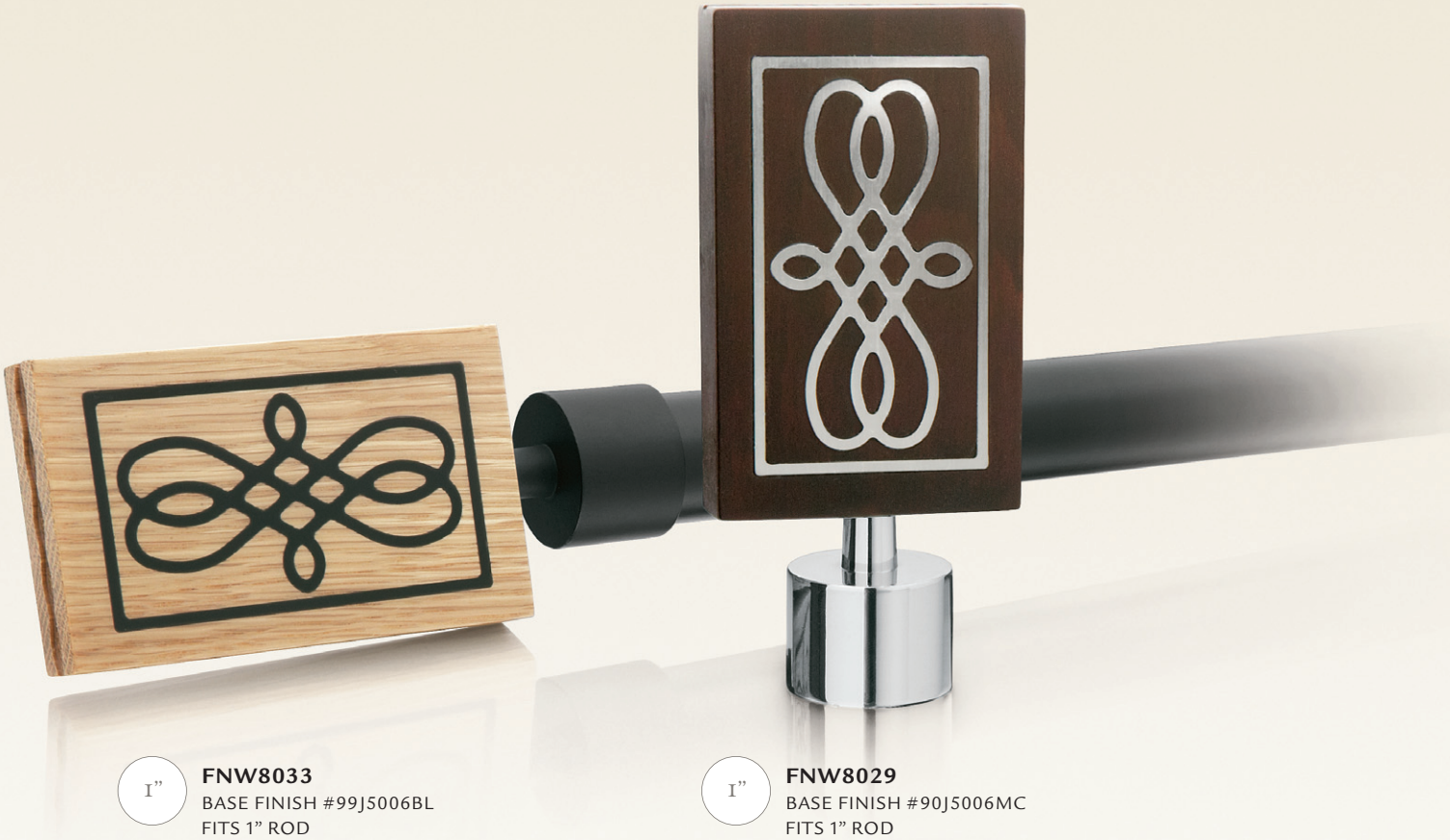
Finials **FNW8039** to **FNW8045** are available in three base finishes

FINIALS

Inlay finials with their elaborately carved design are inset with resin or metal accents.

FINISHES

FNW8028 to FNW8035 are available in three base finishes:
90J5006MC - mirror chrome
94J5006AP - antique pewter
99J5006BL - black



1" **FNW8033**
BASE FINISH #99J5006BL
FITS 1" ROD

1" **FNW8029**
BASE FINISH #90J5006MC
FITS 1" ROD

Finials **FNW8028 to FNW8035** are available in three base finishes

RODS

Metal, acrylic and faux-leather rods are available in various lengths. See page 26 for complete details.



METAL



ACRYLIC



FAUX-LEATHER

ACCESSORIES

See pages 26 and 27 for complete range of available accessories.

FNW8034



FNW8035



FNW8033



FNW8031



FNW8032



FNW8030



FNW8028



FNW8029



Finials **FNW8028** to **FNW8035** are available in three base finishes

FINIALS

Overlay finials feature a delicate stencil of natural **Teak**, **Wenge** or **Beech** wood and have been applied to a frosted resin.

FINISHES

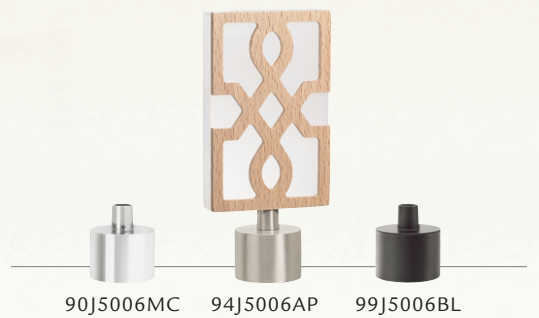
FNW8036 to FNW8038 are available in three base finishes:
 90J5006MC - mirror chrome
 94J5006AP - antique pewter
 99J5006BL - black



1" **FNW8037**
 BASE FINISH #94J5006AP
 FITS 1" ROD

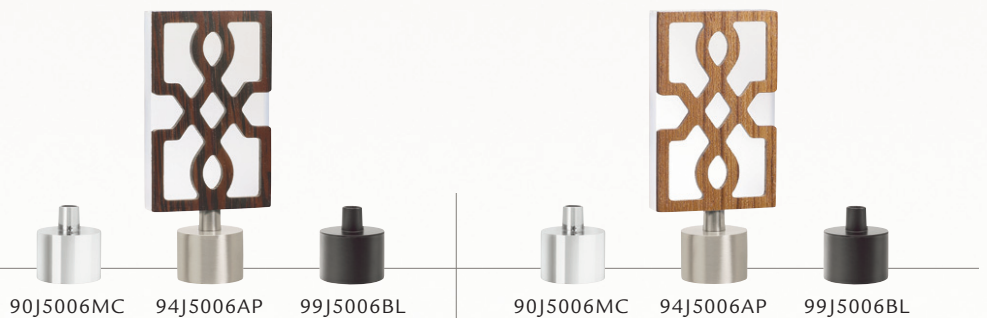
1" **FNW8036**
 BASE FINISH #99J5006BL
 FITS 1" ROD

FNW8038



FNW8036

FNW8037



Finials **FNW8036 to FNW8038** are available in three base finishes

Complement your drapery hardware catalogue with a wall display board showcasing a range of finial and finish options.

Purchase price: \$175

Please reference J5007 when ordering.



27"

24"

RODS

Metal, acrylic, faux-leather and laminated rods are available in various diameters and lengths as noted.



RINGS

Flat fixed loop metal rings with easy glide non-scratch liners are available in three finishes. Sold in packages of ten. Acrylic rings are sold in packages of seven.



RIM75

Metal ring for 1" rod

RIM76

Metal ring for 1.5" rod



RIA7032

Acrylic ring for 1" rod

RIA7033

Acrylic ring for 1.5" rod
FIN. #91J5006AC

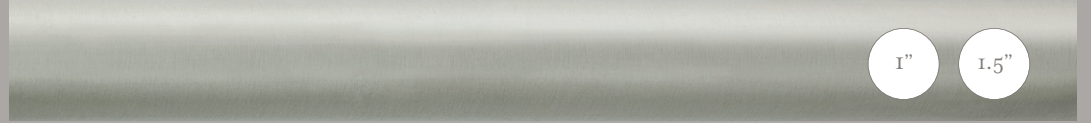
METAL RODS



RDM81 - 90J5006MC - 72" x 1"
RDM78 - 90J5006MC - 96" x 1"

RDM82 - 90J5006MC - 72" x 1.5"
RDM79 - 90J5006MC - 96" x 1.5"

MIRROR CHROME



RDM81 - 94J5006AP - 72" x 1"
RDM78 - 94J5006AP - 96" x 1"

RDM82 - 94J5006AP - 72" x 1.5"
RDM79 - 94J5006AP - 96" x 1.5"

ANTIQUÉ PEWTER



RDM81 - 99J5006BL - 72" x 1"
RDM78 - 99J5006BL - 96" x 1"

RDM82 - 99J5006BL - 72" x 1.5"
RDM79 - 99J5006BL - 96" x 1.5"

BLACK

ACRYLIC RODS - CLEAR

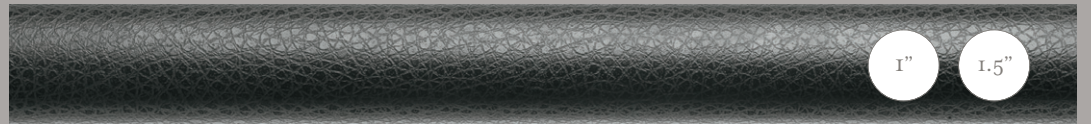


RDA7017 - 91J5006AC - 72" x 1"
RDA7018 - 91J5006AC - 96" x 1"

RDA7019 - 91J5006AC - 72" x 1.5"
RDA7020 - 91J5006AC - 96" x 1.5"

ACRYLIC

FAUX-LEATHER RODS



RDM7021 - 98J5006EB - 72" x 1"
RDM7022 - 98J5006EB - 96" x 1"

RDM7023 - 98J5006EB - 72" x 1.5"
RDM7024 - 98J5006EB - 96" x 1.5"

EMBOSSÉD BLACK



SPM9112 - splice for 1" rod
SPM9113 - splice for 1.5" rod
FIN. #10J5006MI
Splices are not suitable for acrylic rods.

PLU162 - plug for 1" rod
PLU163 - plug for 1.5" rod
FIN. #10J5006MI
Plugs are not suitable for acrylic and laminated rods.

CORNER ELBOWS

Allows rods to be mounted at angles ranging from 90° to 270°. Perfect for bay window installations. Not suitable for acrylic and laminated rods. Available in three finishes.



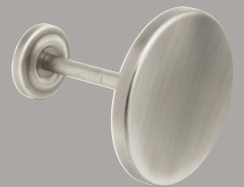
AEM86 - 1" elbow
AEM87 - 1.5" elbow

TIEBACKS

Available in three finishes. Sold individually.



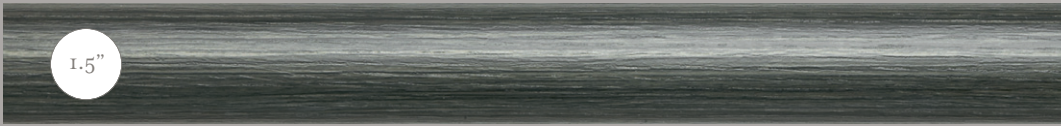
HTM158
Tieback with 4" offset



TBM7031
3.5" diameter tieback with 4" projection

Accessories are available in three finishes

LAMINATED RODS



RDM7025 - 96J5006SM - 72" x 1.5"

SMOKE

RDM7026 - 96J5006SM - 96" x 1.5"



RDM7027 - 14J5006BD - 72" x 1.5"

BLONDE OAK

RDM7028 - 14J5006BD - 96" x 1.5"



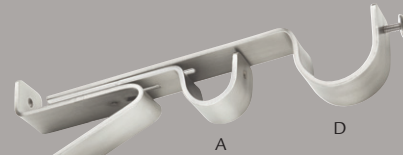
RDM7029 - 46J5006UM - 72" x 1.5"

UMBER

RDM7030 - 46J5006UM - 96" x 1.5"

BRACKETS

Standard and extended brackets may be used individually with triangular base or combined creating a double bracket. Double brackets may accommodate two rods of the same or different diameters. All brackets sold individually. Refer to price list for additional measurements.



BRM55 + BRM56 + BRM59 + RBM67

ROSETTES

Button rosettes are used as a decorative means of locking the rod into the bracket. Sold individually.

LOOP BRACKETS

Available for 1" and 1.5" rods with adjustable projection. Sold individually.

WALL FLANGES

Securely locks rod into place and are an ideal solution for flush mount installations. Sold in pairs.

ENDCAPS

Metal endcaps provide a finished look when no finial is suitable. Sold in pairs.



BRM55 - bracket base

BRM56 - 1" standard arm (A)
Projection range: 4" - 5"

BRM57 - 1" extended arm (B)
Projection range: 6.75" - 8.5"

BRM58 - 1.5" standard arm (C)
Projection range: 4.5" - 6"

BRM59 - 1.5" extended arm (D)
Projection range: 7" - 8"



BRM62 - 1" loop bracket
Projection: min. 3" - max. 3.5"

BRM63 - 1.5" loop bracket
Projection: min. 3.25" - max. 3.75"



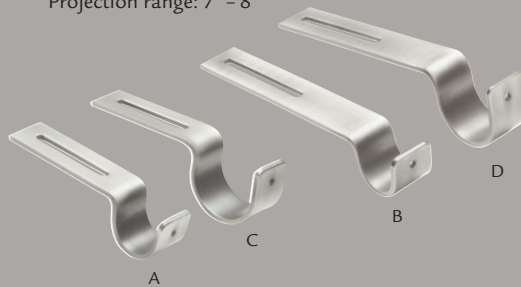
WFM69 - 1" wall flange

WFM70 - 1.5" wall flange



ECM72 - 1" endcap

ECM73 - 1.5" endcap



RBM67 - button rosette

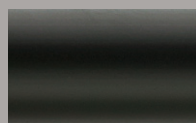
FINISHES



90J5006MC



94J5006AP



99J5006BL



FLA66
43" acrylic fling rod
FIN. #10J5006MI

FLM65
39" metal fling rod available
in three finishes



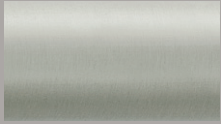
Accessories are available in three finishes

FINISHES

90J5006MC – mirror chrome
 94J5006AP – antique pewter
 99J5006BL – black



90J5006MC



94J5006AP



99J5006BL



FNM7001
 L: 3.25" – H: 2" – Base: 1.375"
 Fits 1" rod
 Finishes: see page 4



FNM7002
 L: 4.25" – H: 3" – Base: 1.625"
 Fits 1.5" rod
 Finishes: see page 4



FNM7003
 L: 3.25" – H: 2" – Base: 1.375"
 Fits 1" rod
 Finishes: see page 5



FNM7004
 L: 4.25" – H: 3" – Base: 1.625"
 Fits 1.5" rod
 Finishes: see page 5



FNM7005
 L: 3.25" – H: 2" – Base: 1.375"
 Fits 1" rod
 Finishes: see page 6



FNM7006
 L: 4.25" – H: 3" – Base: 1.625"
 Fits 1.5" rod
 Finishes: see page 6



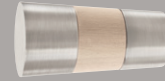
FNM7007
 L: 3.25" – H: 2" – Base: 1.375"
 Fits 1" rod
 Finishes: see page 7



FNM7008
 L: 4.25" – H: 3" – Base: 1.625"
 Fits 1.5" rod
 Finishes: see page 7



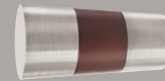
FNM7009
 L: 3.5" – H: 1.75" – Base: 1.25"
 Fits 1" rod
 Finishes: see page 4



FNM7010
 L: 4.5" – H: 2.25" – Base: 1.625"
 Fits 1.5" rod
 Finishes: see page 4



FNM7011
 L: 3.5" – H: 1.75" – Base: 1.25"
 Fits 1" rod
 Finishes: see page 5



FNM7012
 L: 4.5" – H: 2.25" – Base: 1.625"
 Fits 1.5" rod
 Finishes: see page 5



FNM7013
 L: 3.5" – H: 1.75" – Base: 1.25"
 Fits 1" rod
 Finishes: see page 6



FNM7014
 L: 4.5" – H: 2.25" – Base: 1.625"
 Fits 1.5" rod
 Finishes: see page 6



FNM7015
 L: 3.5" – H: 1.75" – Base: 1.25"
 Fits 1" rod
 Finishes: see page 7



FNM7016
 L: 4.5" – H: 2.25" – Base: 1.625"
 Fits 1.5" rod
 Finishes: see page 7



FNM33
 L: 3.75" – H: 2.75" – Base: 2"
 Fits 1.5" rod
 Finishes: see page 10



FNM34
 L: 3" – H: 2.25" – Base: 1.5"
 Fits 1" rod
 Finishes: see page 10

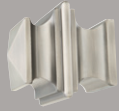
See price list for complete details



FNM35
L: 1.5" – H: 1.75" – Base: 1.25"
Fits 1" rod
Finishes: see page 11



FNM38
L: 4.5" – H: 4.25" – Base: 1.5"
Fits 1.5" rod
Finishes: see page 11



FNM39
L: 3.5" – H: 3.25" – Base: 2.25"
Fits 1.5" rod
Finishes: see page 10



FNM40
L: 2.5" – H: 2.25" – Base: 1.625"
Fits 1" rod
Finishes: see page 10



FNA41
L: 4.875" – H: 3.5" – Base: 1.875"
Fits 1.5" rod
Finishes: see page 8



FNA42
L: 3.25" – H: 2.25" – Base: 1.25"
Fits 1" rod
Finishes: see page 8



FNA43
L: 4.25" – H: 4" – Base: 1.875"
Fits 1.5" rod
Finishes: see pages 8 and 9



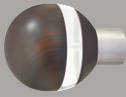
FNA44
L: 3" – H: 2.5" – Base: 1.375"
Fits 1" rod
Finishes: see pages 8 and 9



FNA45
L: 3" – H: 3.75" – Base: 2"
Fits 1.5" rod
Finishes: see pages 8 and 9



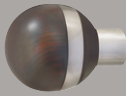
FNA46
L: 2.375" – H: 2.625" – Base: 1.5"
Fits 1" rod
Finishes: see pages 8 and 9



FNW8009
L: 3.75" – H: 3" – Base: 1.25"
Fits 1" rod
Finishes: see page 14



FNW8010
L: 4" – H: 3" – Base: 1.75"
Fits 1.5" rod
Finishes: see page 14



FNW8011
L: 3.75" – H: 3" – Base: 1.25"
Fits 1" rod
Finishes: see page 14



FNW8012
L: 4" – H: 3" – Base: 1.75"
Fits 1.5" rod
Finishes: see page 14



FNW8013
L: 3.75" – H: 3" – Base: 1.25"
Fits 1" rod
Finishes: see page 13



FNW8014
L: 4" – H: 3" – Base: 1.75"
Fits 1.5" rod
Finishes: see page 13



FNW8015
L: 3.75" – H: 3" – Base: 1.25"
Fits 1" rod
Finishes: see page 13



FNW8016
L: 4" – H: 3" – Base: 1.75"
Fits 1.5" rod
Finishes: see page 13



FNW8017
L: 3.75" – H: 3" – Base: 1.25"
Fits 1" rod
Finishes: see page 12



FNW8018
L: 4" – H: 3" – Base: 1.75"
Fits 1.5" rod
Finishes: see page 12



FNW8019
L: 3.75" – H: 3" – Base: 1.25"
Fits 1" rod
Finishes: see page 12



FNW8020
L: 4" – H: 3" – Base: 1.75"
Fits 1.5" rod
Finishes: see page 12



See price list for complete details



FNW8001
L: 5.5" – H: 4" – Base: 2"
Fits 1.5" rod
Finishes: see pages 16 and 17



FNW8002
L: 5.5" – H: 4" – Base: 2"
Fits 1.5" rod
Finishes: see pages 16 and 17



FNW8003
L: 5.5" – H: 4" – Base: 2"
Fits 1.5" rod
Finishes: see pages 16 and 17



FNW8004
L: 5.5" – H: 4" – Base: 2"
Fits 1.5" rod
Finishes: see pages 16 and 17



FNW8005
L: 5.5" – H: 4" – Base: 2"
Fits 1.5" rod
Finishes: see pages 16 and 17



FNW8006
L: 5.5" – H: 4" – Base: 2"
Fits 1.5" rod
Finishes: see pages 16 and 17



FNW8007
L: 5.5" – H: 4" – Base: 2"
Fits 1.5" rod
Finishes: see pages 16 and 17



FNW8008
L: 5.5" – H: 4" – Base: 2"
Fits 1.5" rod
Finishes: see pages 16 and 17



FNW8021
L: 4" – H: 2.75" – Base: 1.25"
Fits 1" rod
Finishes: see pages 18 and 19



FNW8022
L: 4" – H: 2.75" – Base: 1.25"
Fits 1" rod
Finishes: see pages 18 and 19



FNW8023
L: 4" – H: 2.75" – Base: 1.25"
Fits 1" rod
Finishes: see pages 18 and 19



FNW8024
L: 4" – H: 2.75" – Base: 1.25"
Fits 1" rod
Finishes: see pages 18 and 19



FNW8025
L: 4" – H: 2.75" – Base: 1.25"
Fits 1" rod
Finishes: see pages 18 and 19



FNW8026
L: 4" – H: 2.75" – Base: 1.25"
Fits 1" rod
Finishes: see pages 18 and 19



FNW8027
L: 4" – H: 2.75" – Base: 1.25"
Fits 1" rod
Finishes: see pages 18 and 19



FNW8039
L: 4" – H: 3.75" – Base: 1.25"
Fits 1" rod
Finishes: see pages 20 and 21



FNW8040
L: 4" – H: 3.75" – Base: 1.25"
Fits 1" rod
Finishes: see pages 20 and 21



FNW8041
L: 4" – H: 3.75" – Base: 1.25"
Fits 1" rod
Finishes: see pages 20 and 21



FNW8042
L: 4" – H: 3.75" – Base: 1.25"
Fits 1" rod
Finishes: see pages 20 and 21



FNW8043
L: 4" – H: 3.75" – Base: 1.25"
Fits 1" rod
Finishes: see pages 20 and 21



FNW8044
L: 4" – H: 3.75" – Base: 1.25"
Fits 1" rod
Finishes: see pages 20 and 21



FNW8045
L: 4" – H: 3.75" – Base: 1.25"
Fits 1" rod
Finishes: see pages 20 and 21



FNW8028
L: 4.75" – H: 2.125" – Base: 1.25"
Fits 1" rod
Finishes: see pages 22 and 23



FNW8029
L: 4.75" – H: 2.125" – Base: 1.25"
Fits 1" rod
Finishes: see pages 22 and 23



FNW8030
L: 4.75" – H: 2.125" – Base: 1.25"
Fits 1" rod
Finishes: see pages 22 and 23



FNW8031
L: 4.75" – H: 2.125" – Base: 1.25"
Fits 1" rod
Finishes: see pages 22 and 23



FNW8032
L: 4.75" – H: 2.125" – Base: 1.25"
Fits 1" rod
Finishes: see pages 22 and 23



FNW8033
L: 4.75" – H: 2.125" – Base: 1.25"
Fits 1" rod
Finishes: see pages 22 and 23



FNW8034
L: 4.75" – H: 2.125" – Base: 1.25"
Fits 1" rod
Finishes: see pages 22 and 23



FNW8035
L: 4.75" – H: 2.125" – Base: 1.25"
Fits 1" rod
Finishes: see pages 22 and 23



FNW8036
L: 4.75" – H: 2.125" – Base: 1.25"
Fits 1" rod
Finishes: see page 24



FNW8037
L: 4.75" – H: 2.125" – Base: 1.25"
Fits 1" rod
Finishes: see page 24



FNW8038
L: 4.75" – H: 2.125" – Base: 1.25"
Fits 1" rod
Finishes: see page 24

ESSENTIALS 2

is a complete line of drapery hardware which has been designed to meet your every need. This comprehensive catalogue will assist you with every project and installation. Please contact your local Sales Representative to assist you in accomplishing your objectives.

Installations:

We recommend use of a professional installer.

Contract:

The Essentials ② drapery hardware product line is versatile and commonly used in commercial installations. Contact your Sales Representative for contract quotations.

Ordering: Always include item and finish code.

Shipping:

Canadian orders ship FOB Oakville, Ontario.

US orders ship FOB Tonawanda, NY.

Claims and Return Policy:

1. No claims will be considered after 10 days from invoice date.
2. Our Liability for any claim is always limited to the value of the invoice, regardless of the nature of the claim.
3. Customer error – full credit less 25% restocking charge and freight costs.
4. Minimum restocking charge of \$50.00.
5. No returns considered after 30 days from invoice date.
6. No returns on rods that have been cut.
7. All Sales for Clearout products are final, and no returns will be accepted.

A return authorization number must be obtained for all returns and Joanne / J.F. Fabrics will arrange for pick up of the shipment. A 25% or minimum \$50.00 restocking charge and freight charges apply. Items being picked up must be packaged in the same fashion as they were received, to ensure they are in perfect quality for credit.

QUICK SHIP:

All items are in stock for immediate delivery.

JOANNE FABRICS (CANADA) INC.

J.F. FABRICS (USA) INC.

In Canada:

(English) 800-268-2050 • (French) 800-268-2643

In the United States: 800-461-1349

Fax: 905-829-0800

www.joannefabrics.com • www.jffabrics.com

J.F. FABRICS (USA) INC. IS A SUBSIDIARY OF
JOANNE FABRICS (CANADA) INC.





JOANNE FABRICS (CANADA) INC.

J.F. FABRICS (USA) INC.

IN CANADA: (ENGLISH) 800-268-2050 • (FRENCH) 800-268-2643

IN THE UNITED STATES: 800-461-1349

FAX: 905-829-0800

WWW.JOANNEFABRICS.COM

WWW.JFFABRICS.COM

J.F. FABRICS (USA) INC. IS A SUBSIDIARY OF JOANNE FABRICS (CANADA) INC.

