



DRAPERY HARDWARE ESSENTIALS



TABLE OF CONTENTS

# ESSENTIALS

3-9	RESIN COLLECTION
10-16	METAL COLLECTION
17	DÉCOR TRACK
18-19	ACCESSORIES
20-23	ACRYLIC COLLECTION
24-27	NOVELTY COLLECTION
28-32	WOOD COLLECTION
32-35	SPECIFICATIONS

finial: FNR13 / finish: 95J5001PG

rod: RDW93 - 2" / brackets: BRW105 - 2" standard / rings: RIW112

fabric: GLITZY / color: 96J4771



**FINISHES**

**FNR14 and FNR15**

are available in seven finishes:

- 12J5001AW - antique white gold
- 19J5001GB - gold brown
- 33J5001BS - brushed silver
- 36J5001HC - heritage copper
- 78J5001HG - heritage gold
- 95J5001PG - platinum gold
- 97J5001BW - black walnut

**FNR12, FNR13 and FNR160**

are available in six finishes:

- 12J5001AW - antique white gold
- 19J5001GB - gold brown
- 33J5001BS - brushed silver
- 36J5001HC - heritage copper
- 78J5001HG - heritage gold
- 95J5001PG - platinum gold

**FINIALS**

The detailed lotus inspired and tufted jewel finials are available in various sizes and a multitude of sophisticated finishes. Refer to page 33 for finial dimensions.

**RODS**

Color matched wood and metal rods are available in various diameters and lengths of 72" and 96".

			REEDED
			PLAIN
			ROPE
			METAL



1.5"  
 2"

**FNR15**  
 FINISH #95J5001PG  
 FITS 1.5" & 2" ROD

2.75"

**FNR14**  
 FINISH #95J5001PG  
 FITS 2.75" ROD



**RTR25** - rosette  
 FIN. #95J5001PG



**RTR26** - rosette  
 FIN. #95J5001PG



**RTR27** - rosette  
 FIN. #95J5001PG



Finials **FNR14** & **FNR15**  
 are available in seven finishes

12J5001AW

95J5001PG

33J5001BS

19J5001GB

78J5001HG

36J5001HC

97J5001BW



**RINGS**

Color matched wood and metal rings with non-scratch liners are available for all corresponding rod diameters. Refer to accessory pages 18-19 for more details.

**BRACKETS**

A full range of color matched wood & metal brackets available. Refer to accessory pages 18-19 for more details.

**TIEBACKS & ROSETTES**

Decoratively designed to coordinate with all resin finials. Refer to page 18 for complete range of available finishes.

**ACCESSORIES**

See pages 18-19 for details and complete range of available accessories.



**RTR22** – tieback  
FIN. #33J5001BS



**RTR23** – tieback  
FIN. #33J5001BS



**RTR24** – tieback  
FIN. #33J5001BS

**FNR12**  
FINISH #33J5001BS  
FITS 2.75" ROD

2.75"

**FNR13**  
FINISH #33J5001BS  
FITS 1.5" & 2" ROD

1.5"

2"

**FNR160**  
FITS 1" ROD

1"



36J5001HC

78J5001HG

19J5001GB

33J5001BS

95J5001PG

12J5001AW

Finials **FNR12**, **FNR13** & **FNR160** are available in six finishes

**FINISHES**

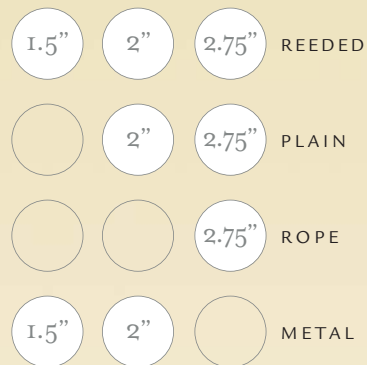
**FNR10, FNR11, FNR18** and **FNR19** are available in eight finishes:  
 12J5001**AW** – antique white gold  
 19J5001**GB** – gold brown  
 33J5001**BS** – brushed silver  
 36J5001**HC** – heritage copper  
 78J5001**HG** – heritage gold  
 95J5001**PG** – platinum gold  
 97J5001**BW** – black walnut  
 99J5001**BL** – black

**FINIALS**

The timeless pineapple and sleek pear shaped finials are available in eight decorative finishes creating a unique and elegant look. Refer to page 33 for finial dimensions.

**RODS**

Color matched wood and metal rods are available in various diameters and lengths of 72” and 96”.



**FNR19**  
 FINISH #12J5001AW  
 FITS 1.5” & 2” ROD

1.5”

2”

2.75”

**FNR18**  
 FINISH #12J5001AW  
 FITS 2.75” ROD



**RTR25** – rosette  
 FIN. #12J5001AW



**RTR26** – rosette  
 FIN. #12J5001AW



**RTR27** – rosette  
 FIN. #12J5001AW



12J5001**AW**



95J5001**PG**



33J5001**BS**



19J5001**GB**



78J5001**HG**



36J5001**HC**



97J5001**BW**



99J5001**BL**

Finials **FNR18** & **FNR19** are available in eight finishes

**RINGS**

Color matched wood and metal rings with non-scratch liners are available for all corresponding rod diameters. Refer to accessory pages 18-19 for more details.

**BRACKETS**

A full range of color matched wood & metal brackets available. Refer to accessory pages 18-19 for more details.

**TIEBACKS & ROSETTES**

Decoratively designed to coordinate with all resin finials. Refer to page 18 for complete range of available finishes.

**ACCESSORIES**

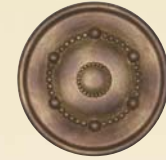
See pages 18-19 for details and complete range of available accessories.



**RTR22** – tieback  
FIN. #19J5001GB



**RTR23** – tieback  
FIN. #19J5001GB



**RTR24** – tieback  
FIN. #19J5001GB



**FNR10**  
FINISH #19J5001GB  
FITS 2.75" ROD

2.75"

**FNR11**  
FINISH #19J5001GB  
FITS 1.5" & 2" ROD

1.5"

2"



33J5001BS



95J5001PG



12J5001AW



99J5001BL



97J5001BW



36J5001HC



78J5001HG



19J5001GB

Finials **FNR10** & **FNR11** are available in eight finishes



**FINISHES**

**FNR16, FNR17 and FNR161** are available in seven finishes:  
 12J5001AW - antique white gold  
 19J5001GB - gold brown  
 33J5001BS - brushed silver  
 36J5001HC - heritage copper  
 78J5001HG - heritage gold  
 95J5001PG - platinum gold  
 97J5001BW - black walnut

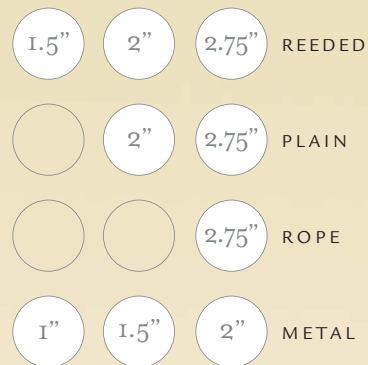
**FNR20, ECR28, ECR29 and ECR30** are available in eight finishes:  
 12J5001AW - antique white gold  
 19J5001GB - gold brown  
 33J5001BS - brushed silver  
 36J5001HC - heritage copper  
 78J5001HG - heritage gold  
 95J5001PG - platinum gold  
 97J5001BW - black walnut  
 99J5001BL - black

**FINIALS**

Reminiscent of old world, these monarch style finials offer a sophisticated traditional look. Refer to page 33 for finial dimensions.

**RODS**

Color matched wood and metal rods are available in various diameters and lengths of 72" and 96".



**FNR16**  
 FINISH #36J5001HC  
 FITS 2.75" ROD

2.75"

**FNR17**  
 FINISH #36J5001HC  
 FITS 1.5" & 2" ROD

1.5"

2"

**FNR161**  
 FITS 1" ROD

1"



**RTR25** - rosette  
 FIN. #36J5001HC



**RTR26** - rosette  
 FIN. #36J5001HC



**RTR27** - rosette  
 FIN. #36J5001HC



12J5001AW

95J5001PG

33J5001BS



19J5001GB

78J5001HG

36J5001HC

97J5001BW

Finials **FNR16, FNR17 & FNR161** are available in seven finishes



**ENDCAPS**

Ornamental endcaps provide the finishing touch to any rod when space does not permit for use of a finial or simply to achieve a desired look.

**RINGS**

Color matched wood and metal rings with non-scratch liners are available for all corresponding rod diameters. Refer to accessory pages 18-19 for more details.

**BRACKETS**

A full range of color matched wood & metal brackets available. Refer to accessory pages 18-19 for more details.

**TIEBACKS & ROSETTES**

Decoratively designed to coordinate with all resin finials. Refer to page 18 for complete range of available finishes.

**ACCESSORIES**

See pages 18-19 for details and complete range of available accessories.

**FLING ROD**

Permits easy movement of the drapery treatment. Rod length measures 39.5". Refer to accessories page 18 for available finishes.

**ENDCAP FINISHES**



12J5001AW



33J5001BS



95J5001PG



19J5001GB



78J5001HG



36J5001HC



97J5001BW



99J5001BL

**FLR21**

FIN. #78J5001HG



**FNR20**

FINISH #78J5001HG  
FITS 2" ROD

2"

**ECR28**

FINISH #78J5001HG  
ENDCAP FITS 1.5" ROD

1.5"

**ECR29**

ENDCAP FITS 2" ROD

2"

**ECR30**

ENDCAP FITS 2.75" ROD

2.75"



33J5001BS



95J5001PG



12J5001AW



99J5001BL



97J5001BW



36J5001HC



78J5001HG



19J5001GB

Finial **FNR20** is available in eight finishes

METAL COLLECTION

# ESSENTIALS

**finial:** FNM39 / **finish:** 99J5001BL

**rod:** RDM82 - 1.5" / **brackets:** BRM58 - 1.5" standard / **rings:** RIM76 / **button rosette:** RBM67

**fabric:** FLIRT / **color:** 98J4561







**FINISHES**

**FNM32, FNM33 and FNM34**

are available in eight finishes:

- 12J5001AW - antique white gold
- 19J5001GB - gold brown
- 36J5001HC - heritage copper
- 78J5001HG - heritage gold
- 90J5001MC - mirror chrome
- 94J5001AP - antique pewter
- 97J5001BW - black walnut
- 99J5001BL - black

**FNM39 and FNM40**

are available in seven finishes:

- 19J5001GB - gold brown
- 36J5001HC - heritage copper
- 78J5001HG - heritage gold
- 90J5001MC - mirror chrome
- 94J5001AP - antique pewter
- 97J5001BW - black walnut
- 99J5001BL - black

**FINIALS**

Classically designed the customary ball and mission styled finials have been updated for the 21st century by including modern finishes such as antique pewter and mirrored chrome. Refer to page 33 for finial dimensions.

**RODS**

Color matched metal rods are available in various diameters and lengths of 72" and 96".



**FNM34**  
FINISH #19J5001GB  
FITS 1" ROD

**FNM32**  
FINISH #19J5001GB  
FITS 2" ROD

**FNM33**  
FINISH #19J5001GB  
FITS 1.5" ROD



Finials **FNM32, FNM33 & FNM34** are available in eight finishes

**RINGS**

Color matched metal rings with non-scratch liners are available for all corresponding rod diameters. Refer to accessory pages 18-19 for more details.

**BRACKETS**

A full range of color matched metal brackets available. Refer to accessory pages 18-19 for more details.

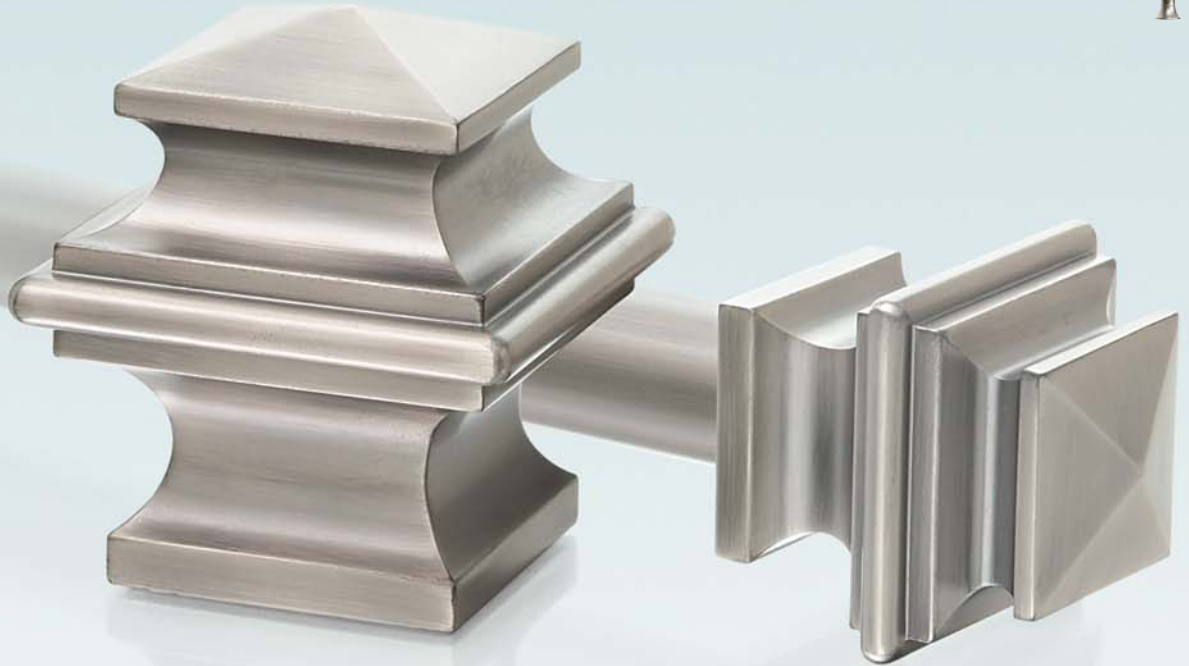
**ACCESSORIES**

See pages 18-19 for details and complete range of available accessories.

**FLING ROD**

Permits easy movement of the drapery treatment. Rod length measures 39". Refer to product specification page 19 for available finishes.

**FLM65**  
FIN. #94J5001AP



**FNM39**  
FINISH #94J5001AP  
FITS 1.5" ROD

1.5"

**FNM40**  
FINISH #94J5001AP  
FITS 1" ROD

1"



94J5001AP



90J5001MC



19J5001GB



99J5001BL



97J5001BW



36J5001HC



78J5001HG

Finials **FNM39** & **FNM40** are available in seven finishes

**FINISHES**

**FNM31, FNM36 and FNM38** are available in five finishes:

- 36J5001HC - heritage copper
- 78J5001HG - heritage gold
- 94J5001AP - antique pewter
- 97J5001BW - black walnut
- 99J5001BL - black

**FNM35** is available in eight finishes:

- 33J5001BS - brushed silver
- 36J5001HC - heritage copper
- 78J5001HG - heritage gold
- 90J5001MC - mirror chrome
- 94J5001AP - antique pewter
- 95J5001PG - platinum gold
- 97J5001BW - black walnut
- 99J5001BL - black

**FINIALS**

The smooth silhouettes of these urn inspired finials add a touch of class and simplicity to any window treatment. Mix and match your rod and finial colors to create something unique. Refer to page 33 for finial dimensions.

**RODS**

Color matched metal rods are available in various diameters and lengths of 72" and 96".



**FNM36**  
FINISH #78J5001HG  
FITS 1" ROD

**FNM31**  
FINISH #36J5001HC  
FITS 1.5" ROD



94J5001AP | 94J5001AP | 78J5001HG | 78J5001HG



36J5001HC | 36J5001HC | 97J5001BW | 97J5001BW | 99J5001BL | 99J5001BL

Finials **FNM36** & **FNM31** are available in five finishes



**RINGS**

Color matched metal rings with non-scratch liners are available for all corresponding rod diameters. Refer to accessory pages 18-19 for more details.

**BRACKETS**

A full range of color matched metal brackets available. Refer to accessory pages 18-19 for more details.

**ACCESSORIES**

See pages 18-19 for details and complete range of available accessories.



**FNM38**  
FINISH #97J5001BW  
FITS 1.5" ROD

1.5"

**FNM35**  
FINISH #97J5001BW  
FITS 1" ROD

1"

Finial **FNM35** is available in eight finishes



99J5001BL

97J5001BW

36J5001HC

78J5001HG

33J5001BS

95J5001PG

94J5001AP

90J5001MC



99J5001BL

97J5001BW

36J5001HC

78J5001HG

94J5001AP

Finial **FNM38** is available in five finishes

## FINISHES

**FNM37** is available in six finishes:

12J5001**AW** – antique white gold

19J5001**GB** – gold brown

36J5001**HC** – heritage copper

78J5001**HG** – heritage gold

97J5001**BW** – black walnut

99J5001**BL** – black



## FNM37

FINISH # 12J5001AW

FITS 1.5" ROD

## FINIALS

True to original design this fleur de lys remains a timeless design element and continues to be a favorite. Refer to page 33 for finial dimensions.

## RODS

Color matched metal rods are available in 1.5" diameter and lengths of 72" and 96".

## RINGS

Color matched metal rings with non-scratch liners are available for all corresponding rod diameters. Refer to accessory page 18-19 for more details.

## BRACKETS

A full range of color matched metal brackets available. Refer to accessory pages 18-19 for more details.

## ACCESSORIES

See pages 18-19 for details and complete range of available accessories.



Finial **FNM37**  
is available in six finishes

19J5001**GB**

78J5001**HG**

36J5001**HC**

97J5001**BW**

99J5001**BL**



12J5001AW



33J5001BS



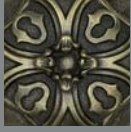
95J5001PG



19J5001GB



36J5001HC



78J5001HG



97J5001BW

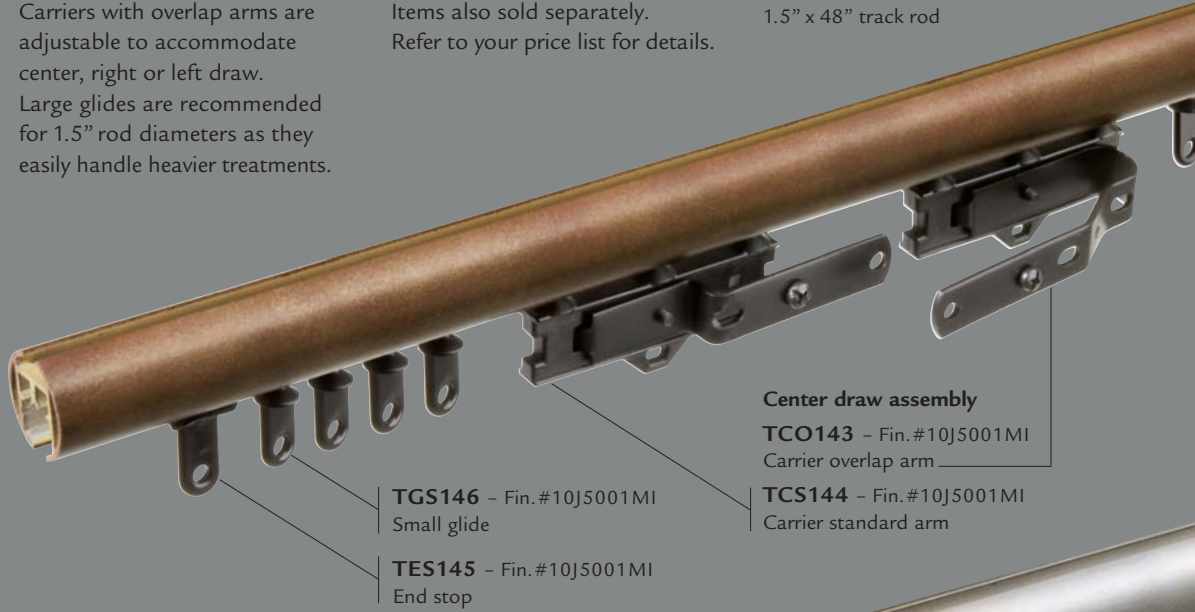


99J5001BL

Using our top mount wall or ceiling brackets the décor track can be installed in any length required without interrupting the curtain flow. A fling rod is recommended for ease of operation and minimal curtain wear. Carriers with overlap arms are adjustable to accommodate center, right or left draw. Large glides are recommended for 1.5" rod diameters as they easily handle heavier treatments.

All metal, acrylic, 1.5" resin and novelty finials easily mount onto the décor track. Décor track kits are available with everything you need for your installation. Simply order the kit corresponding with your rod size and length. Items also sold separately. Refer to your price list for details.

- TRA154**  
1" x 96" track rod
- TRA155**  
1.5" x 96" track rod
- TRA156**  
1" x 48" track rod
- TRA157**  
1.5" x 48" track rod



**1"** **TRK137**  
**1" x 96" TRACK KIT**

**1.5"** **TRK138**  
**1.5" x 96" TRACK KIT**

**Both kits include:**

- décor track rod
- 1 carrier with overlap arm
- 1 carrier with standard arm
- 2 end stops
- 3 wall brackets
- 36 glides (small for 1" rod, large for 1.5" rod)
- 2 décor track split plugs (for 1.5" rod only)
- installation instructions



**1"** **TRK139**  
**1" x 48" TRACK KIT**

**1.5"** **TRK140**  
**1.5" x 48" TRACK KIT**

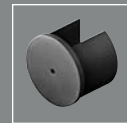
**Both kits include:**

- décor track rod
- 1 carrier with overlap arm
- 1 carrier with standard arm
- 2 end stops
- 2 wall brackets
- 18 glides (small for 1" rod, large for 1.5" rod)
- 2 décor track split plugs (for 1.5" rod only)
- installation instructions



**TCB152**  
Ceiling bracket for 1" rod

**TCB153**  
Ceiling bracket for 1.5" rod



**TSP148** - splice for 1" track rod  
Fin. #10J5001MI

**TSP149** - splice for 1.5" track rod  
Fin. #10J5001MI

Décor track rods and brackets are available in eight painted finishes shown above





12J5001AW



33J5001BS



95J5001PG



19J5001GB



36J5001HC



78J5001HG



97J5001BW



99J5001BL

Accessories shown on this page are available in eight painted finishes.



ECR28 - 1.5" endcap

ECR29 - 2" endcap

ECR30 - 2.75" endcap



RTR25 - 2" rosette (A)

RTR26 - 2" rosette (B)

RTR27 - 2" rosette (C)

### BRACKETS

A full range of standard, extended projection and loop brackets available for all rod sizes and installation requirements. All wood brackets sold individually. Refer to price list for additional bracket measurements.

### RODS

Three styles of hand finished solid wood rods coordinate with resin and most metal finials. Rods may be spliced together to accommodate any installation length using a large or small splice.

### RINGS

Color matched wood rings with fixed loop are available for all corresponding rod diameters. Sold individually.

### TIEBACKS

Tiebacks coordinate with most resin and metal finials and mount seamlessly onto a sectional tieback post with a projection of 2" or 4". Tiebacks and posts sold separately.

### ROSETTES

Resin rosettes are used as a decorative means of locking the rod into the bracket and/or may be mounted on a sectional tieback post.

### ENDCAPS

Resin endcaps provide a finished look when no finial is suitable. Sold individually.

### TIEBACK POST

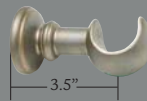
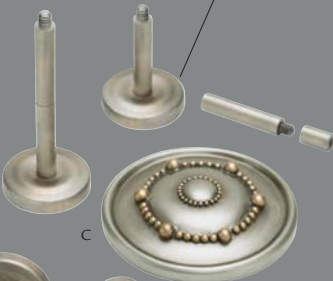
Sectional metal tiebacks accommodate a projection of 2" or 4".

### FLR21

39.5" resin base fling rod

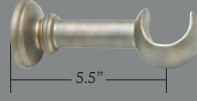
### TPM68

Sectional metal tieback post



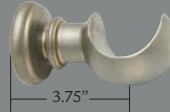
BRW103

1.5" standard bracket



BRW104

1.5" extended bracket



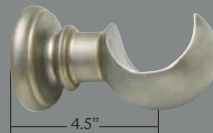
BRW105

2" standard bracket



BRW106

2" extended bracket



BRW107

2.75" standard bracket



BRW108

2.75" bracket extender



BRW109

1.5" adjustable loop bracket  
Max. projection: 8.5"

BRW110

2" adjustable loop bracket  
Max. projection: 9"

RTR22 - 3.75" tieback (A)

RTR23 - 3.75" tieback (B)

RTR24 - 3.75" tieback (C)



1.5" Ø

RDW89 - 72" x 1.5" reeded  
RDW90 - 96" x 1.5" reeded



2" Ø

RDW91 - 72" x 2" reeded  
RDW92 - 96" x 2" reeded



2" Ø

RDW93 - 72" x 2" plain  
RDW94 - 96" x 2" plain



2.75" Ø

RDW95 - 72" x 2.75" reeded  
RDW96 - 96" x 2.75" reeded



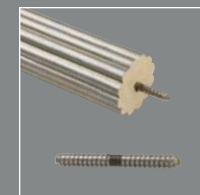
2.75" Ø

RDW99 - 72" x 2.75" plain  
RDW100 - 96" x 2.75" plain



2.75" Ø

RDW97 - 72" x 2.75" rope  
RDW98 - 96" x 2.75" rope



SPW101

Fin. #10J5001MI  
Splice for 2" & 2.75" rod

SPW102

Fin. #10J5001MI  
Splice for 1.5" rod



RIW111 - ring for 1.5" rod

RIW112 - ring for 2" rod

RIW113 - ring for 2.75" rod

Accessories shown on this page are available in eight painted finishes (see chart).

**RODS**

Metal rods may be easily spliced together to accommodate any installation length by using a metal splice.

**RINGS**

Flat fixed loop metal rings with easy glide non-scratch liners. Sold in packages of ten.

**ROSETTES**

Button rosettes are used as a decorative means of locking the rod into the bracket. Sold individually.

**BRACKETS**

Standard and extended brackets may be used individually with triangular base or combined creating a double bracket. Double brackets may accommodate two rods of the same or different diameters and or a décor track. All brackets sold individually. Refer to price list for additional measurements.

**LOOP BRACKETS**

Available for 1", 1.5" and 2" rods with adjustable projection. Sold individually.

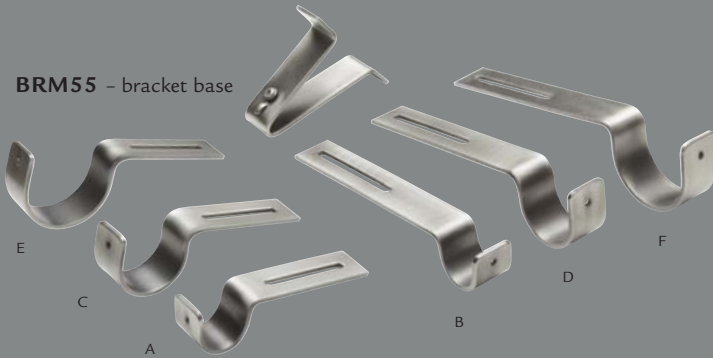
**TIEBACK**

Designed to coordinate with all metal finials. Tieback has 4" offset when mounted. Sold individually.



**HTM158** - metal tieback

**BRM55** - bracket base



**BRM56** - 1" standard arm (A)  
Projection range: 4" - 5"

**BRM57** - 1" extended arm (B)  
Projection range: 6.75" - 8.5"

**BRM58** - 1.5" standard arm (C)  
Projection range: 4.5" - 6"

**BRM59** - 1.5" extended arm (D)  
Projection range: 7" - 8"

**BRM60** - 2" standard arm (E)  
Projection range: 4.5" - 6"

**BRM61** - 2" extended arm (F)  
Projection range: 7.5" - 9"

**WALL FLANGES**

Securely lock rod into place and are an ideal solution for flush mount installations. Sold in pairs.

**ENDCAPS**

Metal endcaps provide a finished look when no finial is suitable. Sold in pairs.

**CORNER ELBOWS**

Allow rods to be mounted at angles ranging from 90° to 270°. Perfect for bay window installations.



**RIM75** - ring for 1" rod

**RIM76** - ring for 1.5" rod

**RIM77** - ring for 2" rod



**AEM86** - 1" elbow

**AEM87** - 1.5" elbow

**AEM88** - 2" elbow



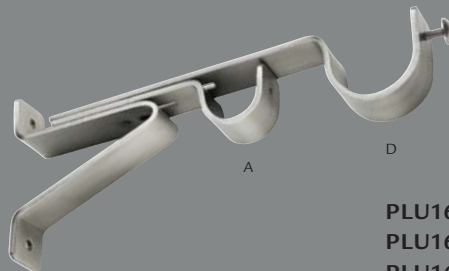
**BRM62** - 1" loop bracket  
Projection: min. 3" - max. 3.5"

**BRM63** - 1.5" loop bracket  
Projection: min. 3.25" - max. 3.75"

**BRM64** - 2" loop bracket  
Projection: min. 3.5" - max. 4.25"



**RBM67**  
Button rosette



**BRM55 + BRM56 + BRM59 + RBM67**



**WFM69** - 1" wall flange set

**WFM70** - 1.5" wall flange set

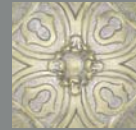
**WFM71** - 2" wall flange set



**ECM72** - 1" endcap set

**ECM73** - 1.5" endcap set

**ECM74** - 2" endcap set



**12J5001AW**



**33J5001BS**



**95J5001PG**



**19J5001GB**



**36J5001HC**



**78J5001HG**



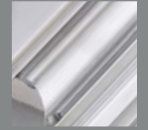
**97J5001BW**



**99J5001BL**



**94J5001AP**



**90J5001MC**

Metal accessories shown on this page are available in eight painted, as well as two plated metal finishes (antique pewter and mirror chrome).

**FLM65**  
39" metal fling rod



**1" ∅** **RDM78** - 96" x 1" metal rod  
**RDM81** - 72" x 1" metal rod



**1.5" ∅** **RDM79** - 96" x 1.5" metal rod  
**RDM82** - 72" x 1.5" metal rod



**2" ∅** **RDM80** - 96" x 2" metal rod  
**RDM159** - 72" x 2" metal rod

**SPM83** - splice for 1" metal rod  
**SPM84** - splice for 1.5" metal rod  
**SPM85** - splice for 2" metal rod  
Fin. #10J5001MI

Accessories shown on this page are available in eight painted plus two plated metal finishes (see chart)

ACRYLIC COLLECTION

# ESSENTIALS

**finial:** FNA45 / **finish:** 90J5001MC

**rod:** RDM82 - 1.5" / **brackets:** BRM58 - 1.5" standard / **button rosette:** RBM67

**fabric:** CALICO / **color:** 90J4711





**FINISHES**

FNA41, FNA42, FNA43, FNA44, FNA45 and FNA46 are available in four finishes:  
 90J5001MC - mirror chrome  
 94J5001AP - antique pewter  
 97J5001BW - black walnut  
 99J5001BL - black

**FINIALS**

Unparalleled craftsmanship of the classic ball, square and spin top allows these perfectly balanced translucent finials to capture and reflect light infusing the home with character and style. Refer to page 34 for finial dimensions.

**RODS**

Color matched metal rods are available in various diameters and lengths of 72" and 96".



1"

**FNA42**  
 FINISH #90J5001MC  
 FITS 1" ROD

1.5"

**FNA41**  
 FINISH #90J5001MC  
 FITS 1.5" ROD

1.5"

**FNA45**  
 FINISH #90J5001MC  
 FITS 1.5" ROD



90J5001MC

94J5001AP



90J5001MC



94J5001AP



97J5001BW



99J5001BL

FNA41, FNA42 & FNA45 are available in four finishes

**RINGS**

Color matched metal rings with non-scratch liners are available for all corresponding rod diameters. Refer to accessory pages 18-19 for more details.

**BRACKETS**

A full range of color matched metal brackets available. Refer to accessory pages 18-19 for more details.

**ACCESSORIES**

See pages 18-19 for details and complete range of available accessories.

**FLING ROD**

Permits easy movement of the drapery treatment. Acrylic fling rod length measures 43".

**FLA66**  
FIN. #10J5001MI



**FNA44**  
FINISH #94J5001AP  
FITS 1" ROD



**FNA43**  
FINISH #94J5001AP  
FITS 1.5" ROD



**FNA46**  
FINISH #94J5001AP  
FITS 1" ROD



97J5001BW

99J5001BL



99J5001BL

97J5001BW

94J5001AP

90J5001MC

FNA43, FNA44 & FNA46 are available in four finishes



NOVELTY COLLECTION

# ESSENTIALS

**finial:** FNB53 / **finish:** 96J5001CB / **rod:** RDM82 - 1.5"

**brackets:** BRM58 - 1.5" standard / **rings:** RIM76 / **button rosette:** RBM67 / **finish:** 99J5001BL

**fabric:** GLORY / **color:** 12J4951



### FINIALS

This unique collection of Polynesian inspired finials has a distinctive primitive feel. Each design has been intricately pieced together to create a handcrafted mosaic effect. Refer to page 34 for finial dimensions.

### RODS

Color matched metal rods are available in various diameters and lengths of 72" and 96".



**FNB50**  
FINISH #98J5001BB  
FITS 1" ROD

**FNB47**  
FINISH #35J5001BA  
FITS 1.5" ROD

FNB47, FNB48, FNB49 & FNB50 are available as shown



FNB47 - 35J5001BA



FNB48 - 35J5001BA



FNB49 - 98J5001BB



FNB50 - 98J5001BB



**RINGS**

Color matched metal rings with non-scratch liners are available for all corresponding rod diameters. Refer to accessory pages 18-19 for more details.

**BRACKETS**

Refer to accessory pages 18-19 for available brackets.

**ACCESSORIES**

See pages 18-19 for details and complete range of available accessories.



**FNB53**  
FINISH #96J5001CB  
FITS 1.5" ROD

1.5"

**FNB52**  
FINISH #35J5001BA  
FITS 1" ROD

1"



FNB51 - 35J5001BA



FNB52 - 35J5001BA



FNB53 - 96J5001CB



FNB54 - 96J5001CB

FNB51, FNB52, FNB53 & FNB54 are available as shown

WOOD COLLECTION

# ESSENTIALS

**finial:** FNW123 / **finish:** 39J5001ES stained wood

**rod:** RDW120 – 2.25" reeded / **brackets:** BRW126 – 2.25" standard / **rings:** RIW134

**fabric:** NATALIE / **color:** 62J4371





**FINISHES**

**FNW122, FNW123, FNW124**

**ECW131 and ECW132**

are available in three finishes:

34J5001**WA** - walnut

39J5001**ES** - espresso

45J5001**CH** - cherry

**WOOD**

This collection of solid wood finials is available in three stained finishes coordinating with the latest in furniture trends. The round, fluted and turned ball are perfectly scaled for all window heights and harmonize flawlessly with a plain or reeded rod. Refer to page 34 for finial dimensions.

**RODS**

Stained wood rods are available in various diameters and lengths of 72" and 96".



**FNW124**

FINISH #34J5001WA

FITS 1.5" ROD

1.5"

**FNW122**

FINISH #39J5001ES

FITS 2.25" ROD

2.25"



34J5001**WA**



45J5001**CH**



39J5001**ES**



34J5001**WA**



45J5001**CH**



39J5001**ES**

Finials **FNW122** & **FNW124** are available in three finishes

**RINGS**

Color matched wood rings with fixed loop are available for all corresponding rod diameters. Sold individually. Refer to page 32 for finishes.

**BRACKETS**

A full range of standard, extended projection and ceiling mount loop brackets available for all rod sizes and installation requirements. Refer to accessories page 32 for details. All wood brackets sold individually.

**ENDCAPS**

Stained wood end caps provide a finished look when no finial is suitable. Sold individually.

**ACCESSORIES**

See page 32 for complete range of available accessories.



**RIW133**

2.25" ring for 1.5" rods

**RIW134**

3.5" ring for 2.25" rods



1.5"  $\emptyset$

**RDW114** – 72" x 1.5" plain  
**RDW115** – 96" x 1.5" plain



1.5"  $\emptyset$

**RDW116** – 72" x 1.5" reeded  
**RDW117** – 96" x 1.5" reeded



2.25"  $\emptyset$

**RDW118** – 72" x 2.25" plain  
**RDW119** – 96" x 2.25" plain



2.25"  $\emptyset$

**RDW120** – 72" x 2.25" reeded  
**RDW121** – 96" x 2.25" reeded



**FNW123**

FINISH #45J5001CH  
FITS 2.25" ROD

2.25"

**ECW131**

FINISH #45J5001CH  
ENDCAP FITS 1.5" ROD

1.5"

**ECW132**

ENDCAP FITS 2.25" ROD

2.25"



34J5001WA



45J5001CH



39J5001ES



34J5001WA



45J5001CH



39J5001ES

**FNW123, ECW131 & ECW132**  
are available in three finishes

**This color chart** is designed to serve as a guide for color matching. Every effort has been made to ensure consistency of finish amongst our products. Different methods of finish application onto different materials result in some variation of finish. Most finishes are hand applied providing the unique appearance of the J.F. drapery hardware Essentials line.

**PAINTED FINISHES**

- 12J5001AW – antique white gold
- 19J5001GB – gold brown
- 33J5001BS – brushed silver
- 36J5001HC – heritage copper
- 78J5001HG – heritage gold
- 95J5001PG – platinum gold
- 97J5001BW – black walnut
- 99J5001BL – black

**PLATED METAL FINISHES**

- 90J5001MC – mirror chrome
- 94J5001AP – antique pewter

**STAINED WOOD FINISHES**

- 34J5001WA – walnut
- 39J5001ES – espresso
- 45J5001CH – cherry

Stained wood accessories continued...

- WFW135**  
1.5" wall flange
- WFW136**  
2.25" wall flange

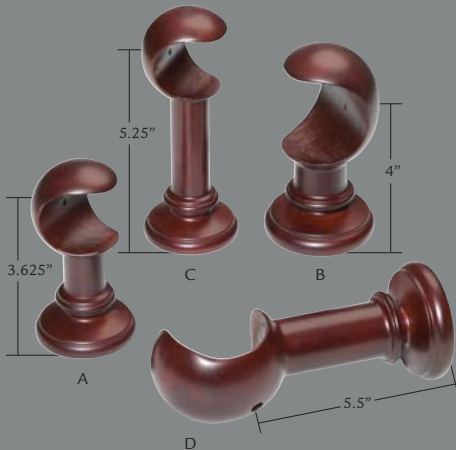


- BRW125**  
1.5" standard bracket (A)
- BRW126**  
2.25" standard bracket (B)
- BRW127**  
1.5" extended bracket (C)
- BRW128**  
2.25" extended bracket (D)



**TBW151** – 4" ø tieback  
Projection: 4.5"

- BRW129**  
1.5" adjustable loop bracket  
Max. projection: 8.5"
- BRW130**  
2.25" adjustable loop bracket  
Max. projection: 9"



STAINED WOOD

34J5001WA



STAINED WOOD

45J5001CH



STAINED WOOD

39J5001ES



PAINTED

12J5001AW



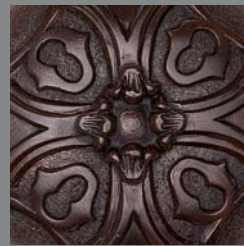
PAINTED

95J5001PG



PAINTED

36J5001HC



PAINTED

97J5001BW



PAINTED

33J5001BS



PAINTED

19J5001GB



PAINTED

78J5001HG



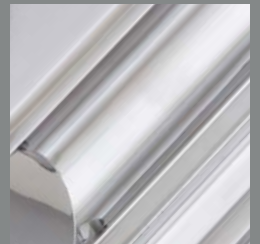
PAINTED

99J5001BL



PLATED METAL

94J5001AP



PLATED METAL

90J5001MC





**FNR10**  
L: 9.75" – H: 5" – Base: 3.5"  
Fits 2.75" rod  
Finishes: see page 7



**FNR18**  
L: 7.5" – H: 4.75" – Base: 3.25"  
Fits 2.75" rod  
Finishes: see page 6



**FNM31**  
L: 4.25" – H: 2" – Base: 2"  
Fits 1.5" rod  
Finishes: see page 14



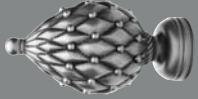
**FNR11**  
L: 6" – H: 3" – Base: 2.25"  
Fits 1.5" & 2" rod  
Finishes: see page 7



**FNR19**  
L: 5" – H: 3" – Base: 2.25"  
Fits 1.5" & 2" rods  
Finishes: see page 6



**FNM32**  
L: 4.75" – H: 3.75" – Base: 2.5"  
Fits 2" rod  
Finishes: see page 12



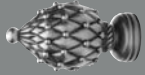
**FNR12**  
L: 9.75" – H: 5" – Base: 3.5"  
Fits 2.75" rod  
Finishes: see page 5



**FNR20**  
L: 4.5" – H: 4" – Base: 2.5"  
Fits 2" rod  
Finishes: see page 9



**FNM33**  
L: 3.75" – H: 2.75" – Base: 2"  
Fits 1.5" rod  
Finishes: see page 12



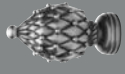
**FNR13**  
L: 6" – H: 3" – Base: 2.25"  
Fits 1.5" & 2" rod  
Finishes: see page 5



**RTR22**  
3.75" Ø Tieback  
Finishes: see page 18



**FNM34**  
L: 3" – H: 2.25" – Base: 1.5"  
Fits 1" rod  
Finishes: see page 12



**FNR160**  
L: 4" – H: 2.125" – Base: 1.375"  
Fits 1" rod  
Finishes: see page 5



**RTR23**  
3.75" Ø Tieback  
Finishes: see page 18



**FNM35**  
L: 1.5" – H: 1.75" – Base: 1.25"  
Fits 1" rod  
Finishes: see page 15



**FNR14**  
L: 8" – H: 4.5" – Base: 3.375"  
Fits 2.75" rod  
Finishes: see page 4



**RTR24**  
3.75" Ø Tieback  
Finishes: see page 18



**FNM36**  
L: 4.5" – H: 2.25" – Base: 1.25"  
Fits 1" rod  
Finishes: see page 14



**FNR15**  
L: 4.5" – H: 3" – Base: 2.25"  
Fits 1.5" & 2" rod  
Finishes: see page 4



**RTR25**  
2" Ø Rosette  
Finishes: see page 18



**FNM37**  
L: 9.25" – H: 5.25" – Base: 2"  
Fits 1.5" rod  
Finishes: see page 16



**FNR16**  
L: 4.75" – H: 4.5" – Base: 2.75"  
Fits 2.75" rod  
Finishes: see page 8



**RTR26**  
2" Ø Rosette  
Finishes: see page 18



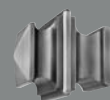
**FNM38**  
L: 4.5" – H: 4.25" – Base: 1.5"  
Fits 1.5" rod  
Finishes: see page 15



**FNR17**  
L: 2.75" – H: 2.5" – Base: 2"  
Fits 1.5" & 2" rod  
Finishes: see page 8



**RTR27**  
2" Ø Rosette  
Finishes: see page 18



**FNM39**  
L: 3.5" – H: 3.25" – Base: 2.25"  
Fits 1.5" rod  
Finishes: see page 13



**FNR161**  
L: 2.25" – H: 2.25" – Base: 1.5"  
Fits 1" rod  
Finishes: see page 8



**ECR28**  
Endcap fits 1.5" rod  
Finishes: see page 9 or 18



**FNM40**  
L: 2.5" – H: 2.25" – Base: 1.625"  
Fits 1" rod  
Finishes: see page 13



**ECR29**  
Endcap fits 2" rod  
Finishes: see page 9 or 18



**ECR30**  
Endcap fits 2.75" rod  
Finishes: see page 9 or 18



**FNA41**  
L: 4.875" – H: 3.5" – Base: 1.875"  
Fits 1.5" rod  
Finishes: see page 22



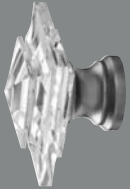
**FNA42**  
L: 3.25" – H: 2.25" – Base: 1.25"  
Fits 1" rod  
Finishes: see page 22



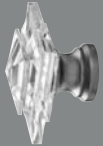
**FNA43**  
L: 4.25" – H: 4" – Base: 1.875"  
Fits 1.5" rod  
Finishes: see page 23



**FNA44**  
L: 3" – H: 2.5" – Base: 1.375"  
Fits 1" rod  
Finishes: see page 23



**FNA45**  
L: 3" – H: 3.75" – Base: 2"  
Fits 1.5" rod  
Finishes: see page 22 & 23



**FNA46**  
L: 2.375" – H: 2.625" – Base: 1.5"  
Fits 1" rod  
Finishes: see page 22 & 23



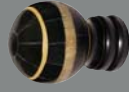
**FNB47**  
L: 4" – H: 3" – Base: 1.875"  
Fits 1.5" rod  
Finish: see page 26



**FNB48**  
L: 3" – H: 2" – Base: 1.5"  
Fits 1" rod  
Finish: see page 26



**FNB49**  
L: 4" – H: 3" – Base: 1.875"  
Fits 1.5" rod  
Finish: see page 26



**FNB50**  
L: 3" – H: 2" – Base: 1.5"  
Fits 1" rod  
Finish: see page 26



**FNB51**  
L: 4" – H: 3" – Base: 1.875"  
Fits 1.5" rod  
Finish: see page 27



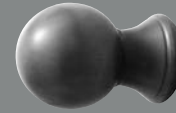
**FNB52**  
L: 3" – H: 2" – Base: 1.5"  
Fits 1" rod  
Finish: see page 27



**FNB53**  
L: 4" – H: 3" – Base: 1.875"  
Fits 1.5" rod  
Finish: see page 27



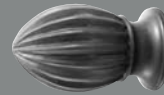
**FNB54**  
L: 3" – H: 2" – Base: 1.5"  
Fits 1" rod  
Finish: see page 27



**FNW122**  
L: 5" – H: 3.5" – Base: 2.75"  
Fits 2.25" rod  
Finishes: see page 30



**FNW123**  
L: 4.5" – H: 3" – Base: 2.5"  
Fits 2.25" rod  
Finishes: see page 31



**FNW124**  
L: 4.75" – H: 2.75" – Base: 2.5"  
Fits 1.5" rod  
Finishes: see page 30



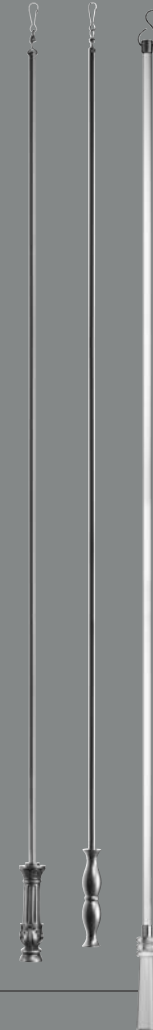
**ECW131**  
Endcap fits 1.5" rod  
Finishes: see page 31



**ECW132**  
Endcap fits 2.25" rod  
Finishes: see page 31



**TBW151**  
4"Ø Tieback – Base: 1.875"  
Projection: 4.5"  
Finishes: see page 32



From left to right:

**FLR21**  
39.5" resin base fling rod  
Finishes: see page 18

**FLM65**  
39" metal fling rod  
Finishes: see page 19

**FLA66**  
43" acrylic fling rod  
Finish: 10J5001MI

See price list for complete details

# ESSENTIALS

is a complete line of drapery hardware which has been designed to meet your every need.

This comprehensive catalogue will assist you with every project and installation.

To better understand our attention to detail each finial has been highlighted in all of our unique handcrafted finishes. Please contact your local sales representative to help assist you in accomplishing your objectives.

## **Installations:**

We recommend use of a professional installer.

## **Contract:**

The Essentials product line is versatile and commonly used in commercial installations. Contact your sales representative for contract quotations.

**Loaner and replacement color chips** are available upon request through our showroom or online at:

**Canada:** [www.joanefabrics.com](http://www.joanefabrics.com)

**USA:** [www.jffabrics.com](http://www.jffabrics.com)

## **Ordering:**

Always include item and finish code.

## **Shipping:**

Canadian orders ship FOB Toronto, Ontario.

US orders ship FOB Buffalo, NY.

## **Claims and Return Policy:**

1. No claims will be considered after 10 days from invoice date.
2. No claims will be considered for more than the values of the invoice.
3. Our error – full credit.
4. Customer error – full credit less 25% restocking charge and freight costs.
5. Minimum restocking charge of \$25.00
6. No returns considered after 30 days from invoice date.
7. No returns on rods that have been cut.

## **A return authorization number**

must be obtained for all returns and Joanne / J.F. Fabrics will arrange pick up of the shipment. A 25% or min. \$25.00 restocking charge and freight charges apply.

---

## **QUICK SHIP:**

All items are in stock for immediate delivery.

---

JOANNE FABRICS (CANADA) INC.

J.F. FABRICS (USA) INC.

## **In Canada:**

(English) 800-268-2050 (French) 800-268-2643

**In the United States:** 800-461-1349

**Fax:** 905-829-0800

[www.joanefabrics.com](http://www.joanefabrics.com) • [www.jffabrics.com](http://www.jffabrics.com)







JOANNE FABRICS (CANADA) INC.

J.F. FABRICS (USA) INC.

IN CANADA: (ENGLISH) 800-268-2050 • (FRENCH) 800-268-2643

IN THE UNITED STATES: 800-461-1349

FAX: 905-829-0800

[WWW.JOANNEFABRICS.COM](http://WWW.JOANNEFABRICS.COM)

[WWW.JFFABRICS.COM](http://WWW.JFFABRICS.COM)

J.F.FABRICS (USA) INC. IS A SUBSIDIARY OF JOANNE FABRICS (CANADA) INC.